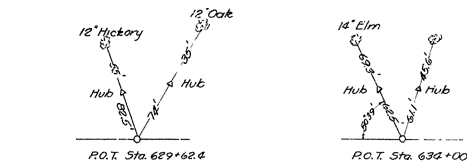
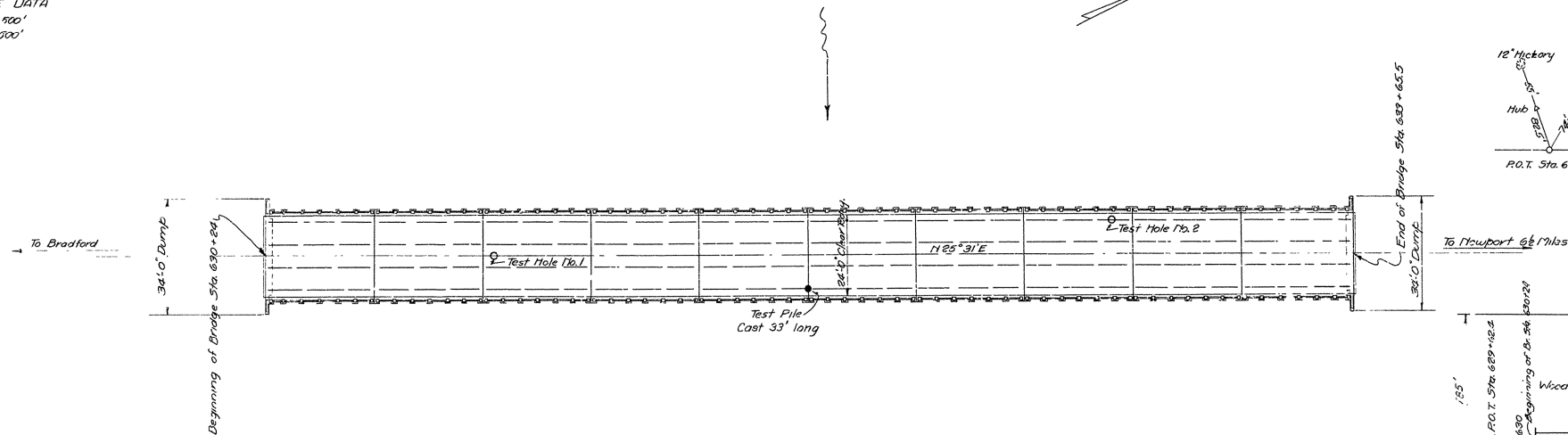


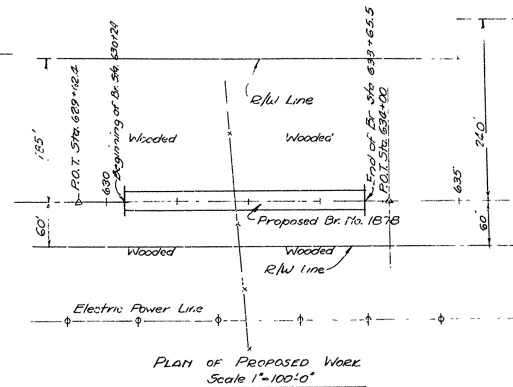
FED. ROAD DIST. NO.	STATE	FEDERAL AID PROJECT NO.	FISCAL YEAR	SHEET NO.	TOTAL SHEETS
6	ARK.	197G	1936		83
State Job No. 10211				6	9

TANGENT DISTANCE DATA

From Beginning of Bridge	over 500'
From End of Bridge	over 500'



General Notes
See Br No. 1575.

[illegible]

B.M. Elev. 223.02
nail in Gas Line Pole 206
200' Ret. Sta. 635+00 31

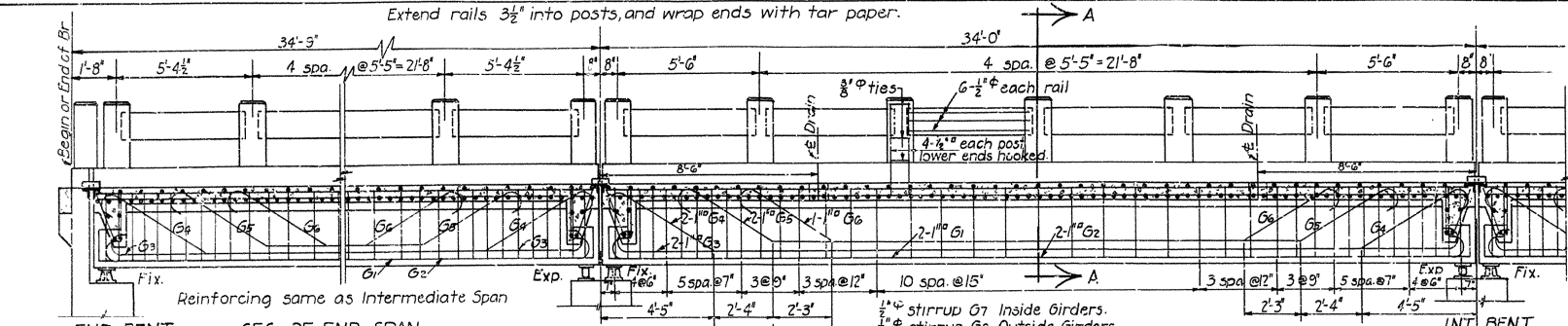
Item No.	Item	Quantity	Unit
802	Class 5" Concrete for Bridges	436.58	Cu.Yds.
803	Reinforcing Steel	113,179	Lbs.
804	Concrete Piling	1,601	Ln.Ft.
805	Concrete Bailing	696	Ln.Ft.
SP-807	Metl Bearrg & Rdwy Expan.Devices	18,552	Lbs.
210, SP-850	State Bridge Name Plates	2	Each

LAYOUT OF
WHITE RIVER VALLEY RELIEF BRIDGE No. 1878
OLYDHANT-NEWPORT ROAD
JACKSON Co.
ROUTE 67 SECTION 16
ARKANSAS STATE HIGHWAY COMMISSION
LITTLE ROCK-ARK.

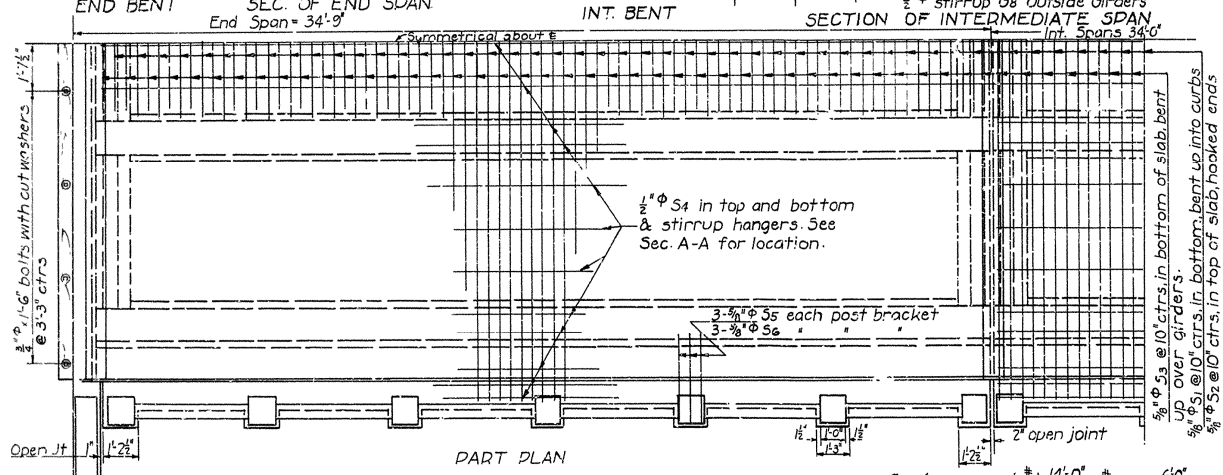
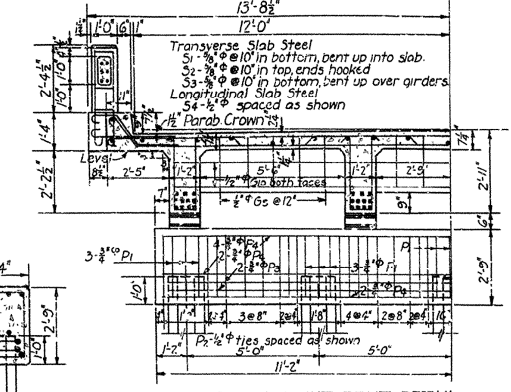
Drawn by H.B. Date 4-24-35
Traced by J.D. 5-3-35 Scale 1"=20'-0"

Checked by
BEIDGE No. 1878 **Dewar No. 4056**

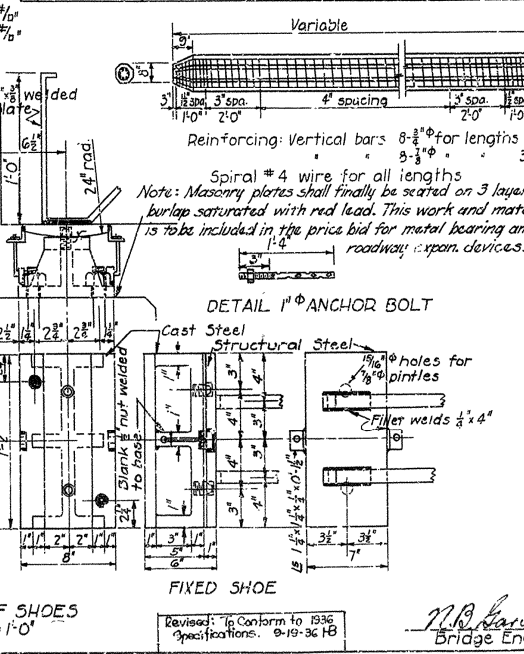
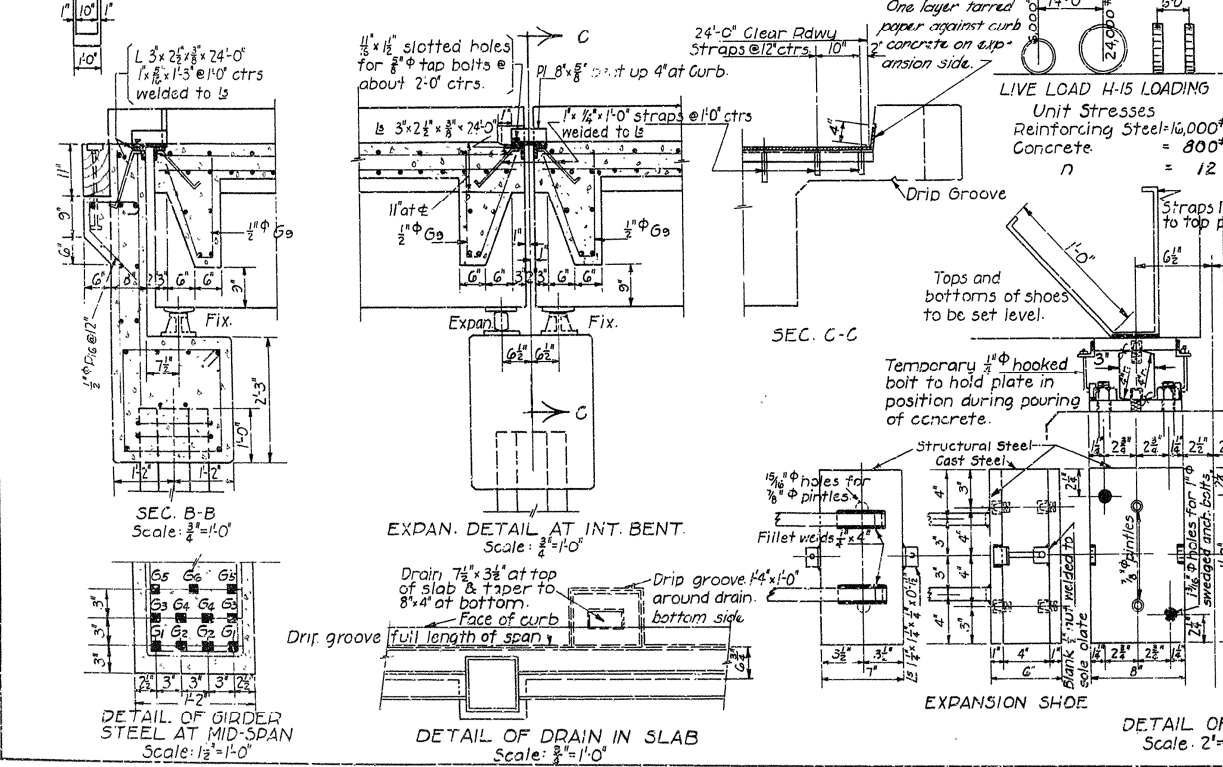
Revised:- Rdy const. omitted - 13 4-8-36, R/W Date, 10-7-36, 13.



RAIL SECTION Scale: 1/2"=1'-0"



BAR LIST		
Mark	Size	Length
S1	5/8"	27'-5"
S2	do	26'-4"
S3	do	27'-1"
S4	do	4'-1"
S5	3/8"	3'-6"
S6	1/2"	33'-4"
G1	1"	37'-2"
G2	do	35'-0"
G3	do	34'-8"
G4	do	36'-0"
G5	do	30'-4"
G6	1"	25'-10"
G7	1/2"	6'-7"
G8	do	6'-5"
G9	do	3'-10"
G10	1/4"	20'-9"
P1	3/4"	8'-7"
P2	1/2"	9'-2"
P3	3/4"	47'-3"
P4	1/2"	8'-1"
P5	3/4"	5'-7"
P6	1/2"	8'-4"
P7	1/2"	21'-11"
P8	1/2"	21'-0"



General Notes
All exposed corners to have 3/4" chamfers unless otherwise noted.
All concrete to be Class 'S'.
Reinforcing steel to be deformed bars of structural or intermediate grade. Shop lists and bending diagrams must be submitted by the Contractor and approval secured before fabrication is begun.
Oak headers to be included in volume of Class 'S' Concrete.
Oak header bolts to be paid for at the unit price bid for reinforcing steel.
Expansion devices and shoes are to be paid for at the unit price bid for metal bearing & roadway expansion devices, unless field paint: All exposed parts of structural steel shall be given one priming coat of red lead and raw linseed oil. First top coat shall be white lead tinted with lamp black. Second top coat shall be aluminum paint.
Concrete piling to be Class 'S', and to have a minimum capacity of 30 tons each.
Specifications: Arkansas State Highway Commission, Standard Specifications for Road and Bridge Construction, adopted June 30, 1936.

DETAILS OF STANDARD 34'-0" R.C. DECK GIRDER AND CONCRETE PILE BENTS 4 GIRDER TYPE, 4-5 PILE BENTS 24'-0" CLEAR ROADWAY

ARKANSAS STATE HIGHWAY COMMISSION
LITTLE ROCK, ARK.

Drawn by: W.C.H. Date: 7-26-35
Traced by: A Date: 8-13-35 Scale: 3/8"=1'-0" (except as noted)
Checked by: Date: _____
BRIDGE NO. 10341 - West 7th St. DRWG NO. 2330

Revised: To Conform to 1936 Specifications. 9-19-36 H.B. Farmer Bridge Engineer